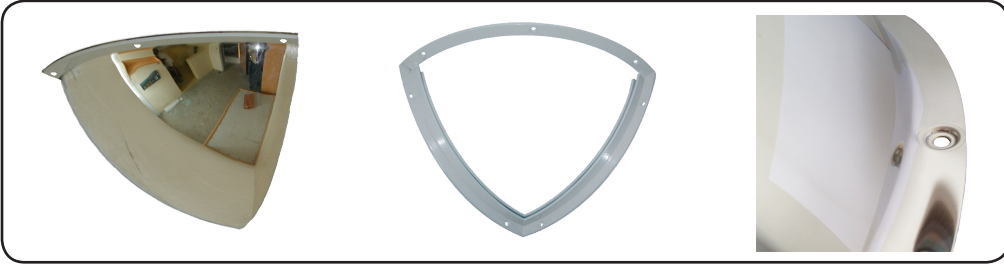




**DuraVision™ Convex Mirror Product Sheet:**



**Situation Images:**



▶ Cell Observation



▶ Safely View Hard to See Areas



▶ View Safely Before Entering the Cell

**Quarter Dome Stainless Steel**

The DuraVision Stainless Steel Quarter Dome is manufactured from highly polished mirror grade stainless steel. The Quarter Dome should be mounted in cells and at right angle corners to provide 90 degree vision to prevent surprise attacks and collisions. The Quarter Dome is ideal for use in situations where space is at a premium for a 90 degree area of reflection.

**Features**

- Virtually indestructible and unbreakable mirror quality polished stainless steel face, designed to maximise the viewing area which will provide added safety
- Counter-Sunk and Counter-Step holes designed to take security head fasteners such as Rawl Spikes or Torx Screws
- The mirror is locked into the unique steel frame which ensures that the risk of the mirror being tampered with is reduced significantly.
- Virtually a maintenance free, long lasting, unbreakable surveillance system.

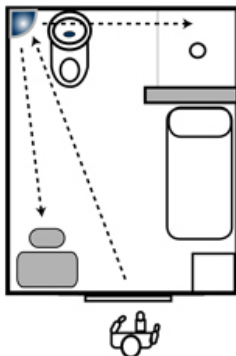
**Suitable Uses**

- In cells for safe inspection
- Day rooms and visitation areas
- Right Angle corridors

**Specifications**

| Code    | Size      | View Distance | Mirror Face     | Frame               | Mounting Holes |
|---------|-----------|---------------|-----------------|---------------------|----------------|
| 16525HD | 250x250mm | Under 6m      | Stainless Steel | Powder Coated Steel | 7              |

**Positioning in Cell**



**DuraVision™ Mirror Systems**

Find our more about the great range of DuraVision Mirror Systems at our website...



[www.duravision.net](http://www.duravision.net)  
[www.correctionsmirror.com](http://www.correctionsmirror.com)